

Knot Cushion

# Knot Cushion

by Ragnheiður Ösp Sigurðardóttir





Unique character.  
Sculptural form.

A cushion with an unique character, based on sculptural form instead of patterns. Knot is made from a knitted tube, several meters in length, which is then tied up to create a compact knot which is as comfortable as a support in the sofa as it is elegant to behold. Thanks to its strong design, Ragnheiður Ösp Sigurðardóttir's Knot cushion belongs to the exclusive group of products that remain in one's memory.

## Knot Cushion





## Knot Cushion

But there was a long way to go when she started experimenting with tubular knitting on a machine some five years ago. She was really looking for an efficient way of manufacturing the legs of a teddy bear rather than crocheting them by hand. But she ended up with a knot-like cushion and where exactly the inspiration came from she has wondered about herself: “As a child I was in the scouts,” she explains, “and I was very good at doing knots.”

Knot is a fantasy form taking its inspiration in the making of knots, knitting, exploring sculptural forms instead of ordinary patterns. Born in part as a try to manufacture rather than crocheting legs for a teddy bear, the original Knot cushion became a homey art gallery piece.





*"You don't really know what it is when first look at it, it offers an opportunity to use your imagination! It is part influenced by pop art, by pop-ups, looking like a sculpture, but a sculpture with function. That is what design should be: playful, comfortable, well built, and something that makes you smile."*

— Ragnheiður Ösp Sigurðardóttir (designer).



Knot Cushion





## Ragnheiður Ösp Sigurðardóttir

By helping her grandfather who was a signmaker in Iceland, Ragnheiður Ösp Sigurðardóttir was inspired to work creatively at an early age. "There was always this strong sense of DIY and making things happen. This way of thinking inspired me to open my mind and see that it is possible to create anything."

After studies at the Iceland Academy of Arts and Cranbrook Academy of Arts, Ragnheiður opened her own studio in Reykjavik. The Knot cushion was born in 2011, while she was making bear figures made of crocheted tubes. "I wanted to try tying the tubes into knots and seeing the outcome. I found the idea of a big, soft knot intriguing in a fun kind of pop-art way. I also like that when you take a first look at the cushion you might not really know what it is, and perhaps that is what draws you closer."



## Product Information

### Dimensions & Weight:

Length — 30 cm (11.8")

Width — 30 cm (11.8")

Height — 15 cm (5.9")

Weight — 650 g (1.4 lbs)

### Material:

Fabric — 30% wool/70% acrylic  
(*Ochre, Lilac, Mint Green,  
Grey, Navy Blue, Bordeaux,  
Dusty Pink & Yellow*)

Fabric — 50% wool/50% acrylic  
(*Brown, Cream, Forest Green  
& White/Grey*)

Filling — 100% polyester

### Dimensions & Weight (Packaging):

Length — 29 cm (11.5")

Width — 29 cm (11.5")

Height — 18 cm (7")

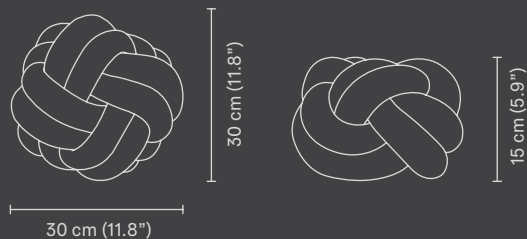
Weight — 850kg (1.9 lbs)

### Care Instructions:

Hand wash cold (30°C) with  
similar colors, dry flat.

### Country of Origin:

Lithuania





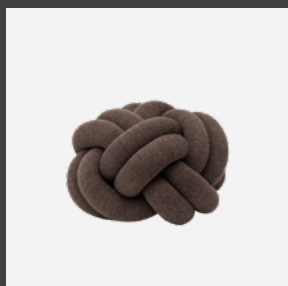
## Retail Images\* (Image 1)



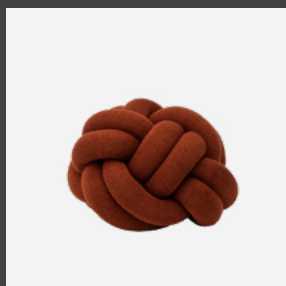
**NEW** Lilac (2351—5200)



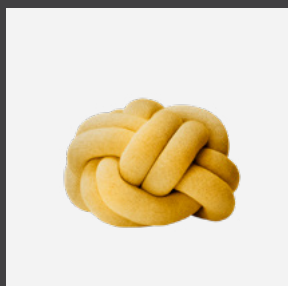
**NEW** Mint Green (2351—5700)



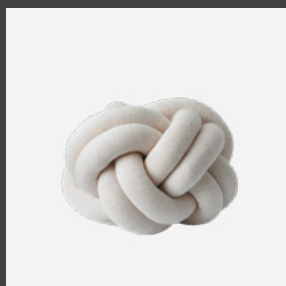
**NEW** Brown (2351—0613)



**NEW** Ochre (2351—4400)



Yellow (2351—2000)



Cream (2351—0900)



Dusty Pink (2351—4500)



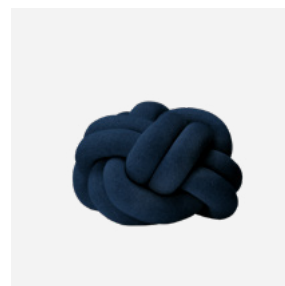
Forest Green (2351—6600)



Grey (2351—1100)



White/Grey (2351—0200)



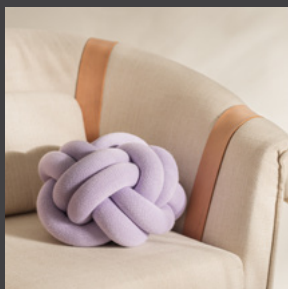
Navy Blue (2351—5400)



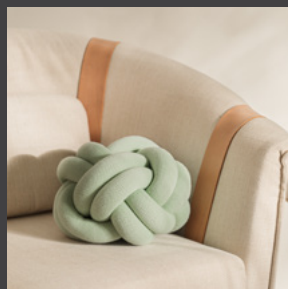
Bordeaux (2351—4300)

*\*Retail Images: Design House Stockholm recommend the stated images in their assigned order to function as e-commerce images.*

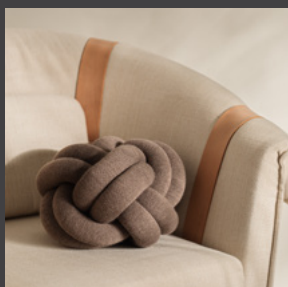
## Retail Images\* (Image 2)



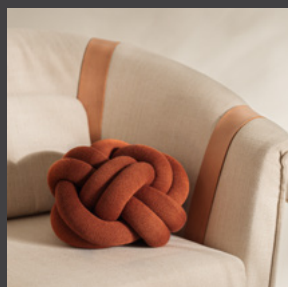
**NEW** Lilac (2351—5200)



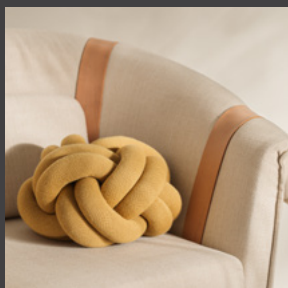
**NEW** Mint Green (2351—5700)



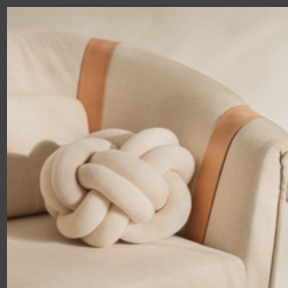
**NEW** Brown (2351—0613)



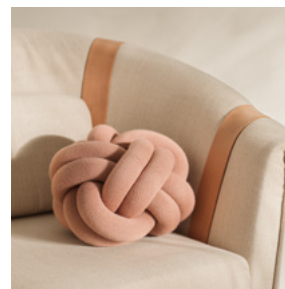
**NEW** Ochre (2351—4400)



Yellow (2351—2000)



Cream (2351—0900)



Dusty Pink (2351—4500)



Forest Green (2351—6600)



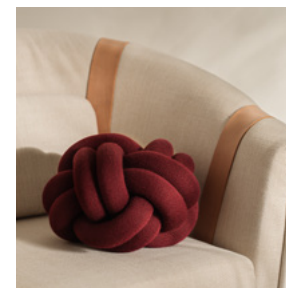
Grey (2351—1100)



White/Grey (2351—0200)



Navy Blue (2351—5400)



Bordeaux (2351—4300)

*\*Retail Images: Design House Stockholm recommend the stated images in their assigned order to function as e-commerce images.*



## Retail Images\* (Image 3 & 4)



Image 03 (Knot Cushion Collection)



Image 04 (Knot Cushion Detail)

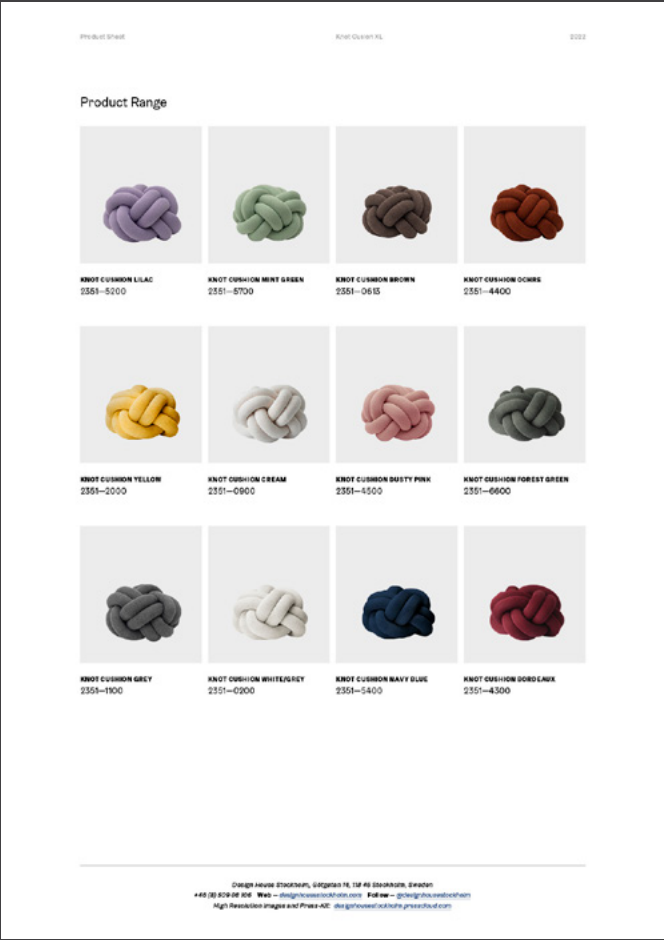
\*Retail Images: Design House Stockholm recommend the stated images in their assigned order to function as e-commerce images.

Box Artwork



**Package Dimension & Weight:** W 29 cm (11.5") D 29 cm (11.5") H 18 cm (7")  
**Weight** — 850kg (1.9 lbs). Brown carbord box with product description and EAN-Sticker.

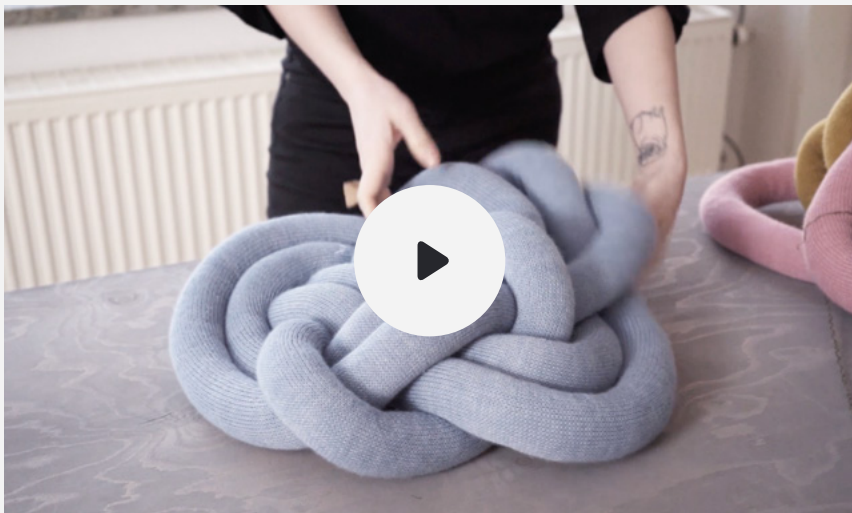
Product Sheet



**Product Sheet Includes:** Product Description, Designer Biography, Materials, Care Instructions, Dimensions & more.



## Product Video



*Ragnheiður Ösp Sigurðardóttir explaining the design process behind the Knot Cushion. (MPEG-4 movie, 77,6 MB, 1920×1080 px).*

