

Tenksom

one seat in the right direction



Rund

Designed by Per Weiss



Sustainability in focus

We select materials and develop designs with sustainability, disassembly, and recirculation in mind.



FSC®-certified

In all of our products, we use FSC®-certified wood - the mark of responsible forestry.



Detachable covers

All our products have detachable covers for easy maintenance.



Prioritizing recycled materials

Our fabrics are all made from or partly made from recycled materials.



OEKO-TEX® fabrics

All our fabrics are OEKO-TEX® certified. OEKO-TEX® is one of the world's best-known labels for textiles tested for harmful substances to ensure customer confidence and high product safety.



10 YEAR

Warranty on frames

We offer a 10-year warranty on our frames, as we want to make sure that all our products have a prolonged lifespan.



Optimized for transport

Our designs and packaging are optimized to ensure minimized CO₂ emissions in relation to transport and storage.

Introduction

As consumers, we are all obligated to reevaluate our consumption habits. Our collective willingness to prioritize the purchase of products that we want to keep over time is crucial, as it is the most effective way to minimize resource consumption and pollution.

As a supplier of upholstered furniture, we are obligated to design and develop products with a long life cycle in mind. At the same time, materials must be selected and designs developed with sustainability, disassembly, and recirculation in mind.

Rund is designed to honor the above principles without compromising functionality, comfort, quality, or aesthetics.





The first principal criteria to meet when designing and producing a meaningful sustainable product is to ensure that the product will have a degree of uniqueness, a convincing and attractive aesthetic and functional profile.

In terms of build, style and comfort, Rund is designed to respect the above.











Rund is a comfortable and practical sofa equipped with removable, washable covers. The design also makes it possible to easily replace individual parts in case they are damaged, or you just want to change the look by replacing the color of the cover or choice of fabric. This is an essential part of the design as it prolongs longevity of the sofa - in the interest of your economy and consumption of resources.







Rund's character is defined by the distinctive and comfortable rounded arm and back. The flexible, modular design will allow you to shape the sofa to your living room, your needs and seating preferences.

Rund has been designed to be comfortable without the use of cushions, but to be able to adjust the sitting comfort and adapt it to a given situation and body structure, we offer a variety of cushions to form the preferred support.





Give back to Nature

In addition to using FSC®-certified wood, we contribute to the balance of the global ecosystem by planting more than 10.000 trees every year to compensate for our consumption of wood.



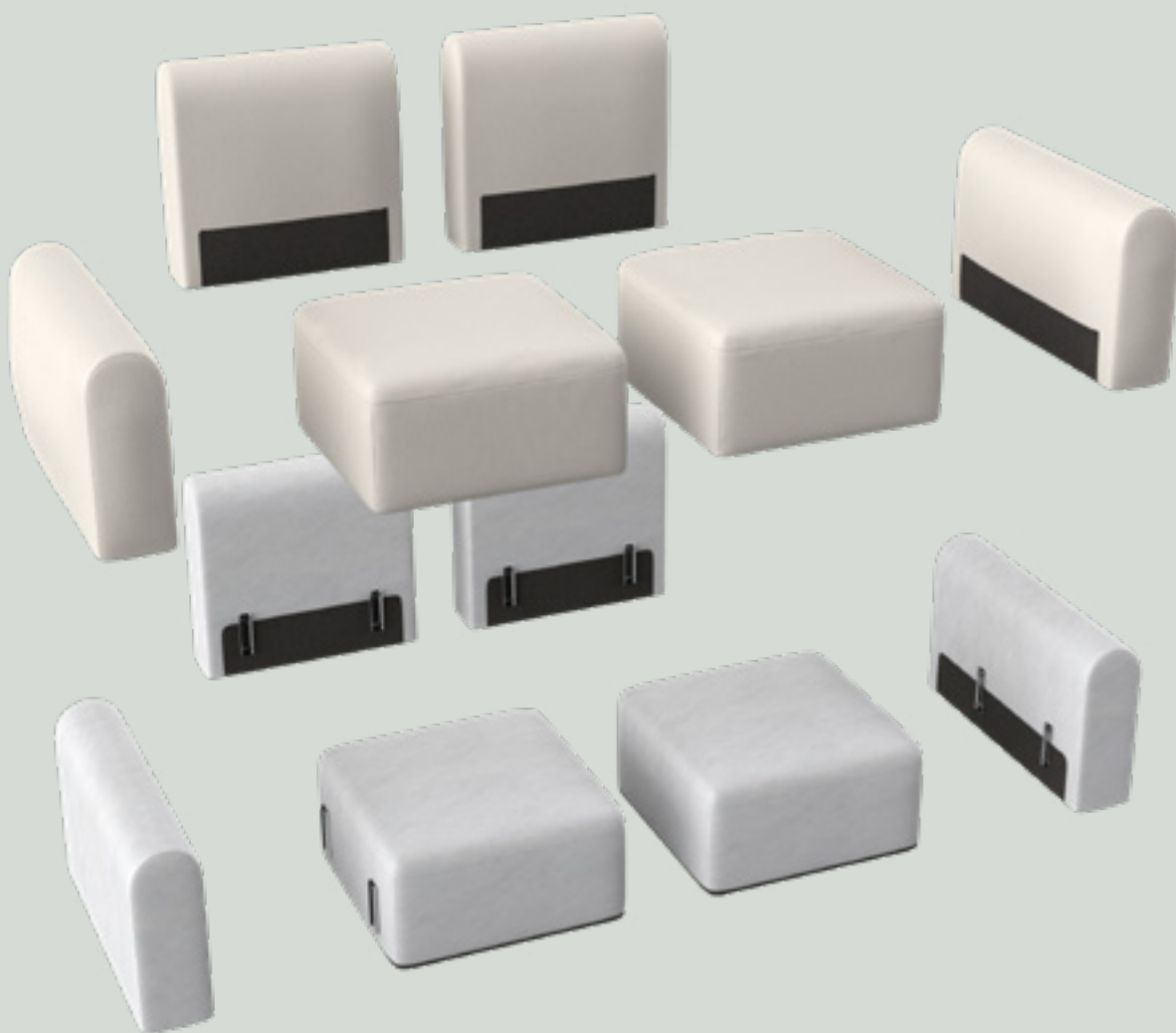
The mark of
responsible forestry

**one seat
in the right direction**

Detachable covers



Upholstery parts



The combinations



Scan the QR code to view the Rund visualizer

The combinations



P1N | 70 x 70 cm



P2N | 92 x 70 cm



77E | 70 x 92 cm



97E | 92 x 92 cm



A1L | 114 x 92 cm



A1H | 114 x 92 cm



A2L | 184 x 92 cm



A2H | 184 x 92 cm



B2L | 228 x 92 cm



B2H | 228 x 92 cm



A3L | 254 x 92 cm



A3H | 254 x 92 cm

Please note that all measurements may vary up to 3 cm due to the handcrafted upholstery.
All combinations are available with either low(L) or high(H) arms. Arm width: 22 cm per arm.

The combinations



B3L | 320 x 92 cm



B3H | 320 x 92 cm



C1L | 184 x 147 cm



C2L | 184 x 147 cm



C3L | 254 x 147 cm



C4L | 254 x 147 cm



D1L | 228 x 182 cm



D2L | 228 x 182 cm

The combinations



D3L | 320 x 182 cm



D4L | 320 x 182 cm



D5L | 298 x 147 cm



D6L | 298 x 147 cm



E1L | 217 x 147 cm



E2L | 217 x 147 cm



E3L | 239 x 182 cm



E4L | 239 x 182 cm

The combinations



F1H | 217 x 217 cm



F2H | 287 x 217 cm



F3H | 287 x 217 cm



K1L | 287 x 147 cm



K2L | 287 x 147 cm



K3L | 309 x 147 cm



K4L | 309 x 147 cm



M1L | 254 x 217 cm

The combinations



M2L | 254 x 217 cm



N1L | 298 x 217 cm



N2L | 298 x 217 cm



U1L | 346 x 182 cm



U2L | 346 x 182 cm



U3L | 390 x 182 cm



U4L | 390 x 182 cm

Tenksom fabric collection

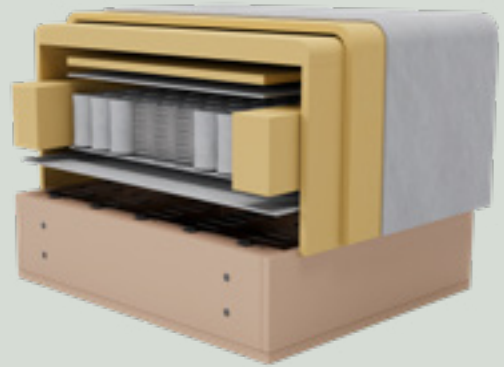
All our products are exclusively crafted with OEKO-TEX® certified recycled fabrics, seamlessly blending elegance with a commitment to sustainability. This approach revitalizes discarded materials while contributing to a more sustainable future. Please visit our website or contact your local dealer to learn more about our fabric collection.

Scan the QR code or visit www.tenksom.com



Comfort

Rund is based on a FSC®-certified beech wood frame. A no-zag base with 12cm pocket spring and OEKO-TEX® high resilient, sandwich constructed foam. Top layer of OEKO-TEX® certified fiberfill creates a soft topping.



Envelope cushions

Detachable covers. OEKO-TEX® carded fibres and fibertex inner covers. Please note that Envelope cushions are optional extras.



50 x 50 cm



65 x 65 cm

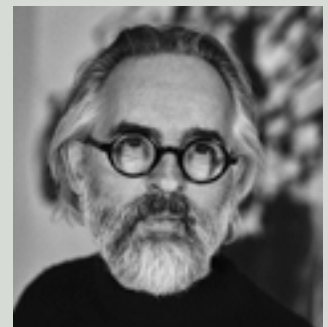


40 x 60 cm



35 x 70 cm

Designed by
Per Weiss



one seat in the right direction

www.tenksom.com

